



SPS COATINGS PVT. LTD.

ECO FRIENDLY PAINTS

**Technology from
NEW ZEALAND**

Power to make a healthy, and colorful ... living

SPS and Royal Range

*Pollution
Control*

O_2

New Zealand

NO ENTRY



- ▲ Zero VOC
- ▲ 100% Waterbased Ecofriendly Paints
- ▲ Antibacterial & Antiviral
- ▲ Compliant to Montreal Protocol, LEED & European Standards

36000 COLOUR DATABASE

Dear Sir/Madam,

SPS is an abbreviation of **Specialised Paint Systems** and as such is committed to pioneering innovative coating technologies to benefit its many customers and the wider environment. That means originating a mix of products which are not only considerably safer than most currently on the market but which do exactly what individual customers require of them, and, in many instances, much more.

We invite you to express yourself with our range of quality products. SPS Coatings is a India based manufacturer and exporter of water based paints manufacturing under licence from SPS Coatings Ltd., New Zealand

In the decorative segment SPS Coatings offers a wide range of products and colours to suit every customer need. With our testing laboratory upgraded to international standards with the latest equipment - we ensure ongoing development and quality control.

SPS has installed the state of the art computer colour matching and tinting technology and has **2024 colours** available to Architects and Interior Designers. In addition to this, SPS has a database of **36,000 colours** which also includes **British Standards, Colour Bond, Australian Standards, Euro Trend, RAL Eco, RAL Design, Federal Standards etc.** Quality has always been the focus of our business and armed with a fully equipped laboratory and a rigorous testing programme, we ensure all products offered to the market have been thoroughly tested in-house before commercial release.

Regards



Sanjiv Joshi

B.E. (Chemical Engineering)



COMMITMENT

SPS is an abbreviation of specialised paint Systems and as such is committed to pioneering innovative coating technologies to benefit its many customers and the wider environment. That means originating a mix of products which are not only considerably safer than most currently on the market but which do exactly what individual customers require of them and in many instances, much more.

EXPERIENCE

SPS Coatings manages to do this by having people with a wealth of experience, product development skills and specialist product knowledge. The company's key people have in-depth experience in paint technology, research and development of special purpose resins, and property maintenance, as well as expertise in highly specialised areas such as coatings for commercial and military aircraft, nuclear power plants, racing craft, water-proofing buildings and high temperature and underwater coatings. Their skills have taken them to every corner of the globe.

HIGH QUALITY

Clearly, Quality is another important consideration. A rigorous testing programme ensures that all products offered to the market have been thoroughly tested before commercial release. All SPS products are guaranteed to perform well within the company's product specifications. SPS has a fully equipped plant based in Auckland, New Zealand.

The production facility is extremely flexible and can cater for long production runs as well as specialised batches to meet specific customer requirements. Raw materials are sourced via integrated supply arrangements from overseas and local suppliers. Particular care is taken to ensure that only materials of the highest standard are used in the manufacturing process.

PRODUCT SAFETY

SPS's concentration on developing effective water-based coatings, as opposed to the more traditional solvent-based products, makes considerable sense. Not only does it reflect the increasing desire worldwide for safer, cleaner environments, it impacts directly on the personal health of users and the ease with which coatings can be applied. SPS's drive to produce VOC (Volatile Organic Compounds) levels well below those stipulated by International Statutes and conventions will continue to be a strong focus for the company.

COST - EFFECTIVENESS

If you add the fact that most of SPS's coating solutions are also cost-effective ones and can in most cases be tailored to customers' individual specifications, we believe the company has a very attractive package to offer.

PRODUCT SUMMARY SHEET

ARCHITECTURAL

All our products are water-based, contain no mineral solvents and are VOC compliant for the year 2008 and beyond, a requirement under the Montreal Protocol

SPS 1306a	Metal Primer	Ideal primer for steel, galvanised or colour steel roofs with surface corrosion. Can be coloured to match top coat.
SPS 1306b	Concrete Tile Roof Primer	Clear coat to seal porous concrete tiles before painting.
SPS 1311a	Acrylic Undercoat	For priming / under coating of Gib, wood, plaster. Excellent sanding properties.
SPS 1311b	Multipurpose Sealer	For sealing MDF, wood etc, and over existing paint.
SPS 1312	Ceiling White	Gives a flat finish, hides imperfections, resistant to moss, mould and lichen growth.
SPS 1313a	Acrykote - Interior Low Sheen	Good wash, scrub and burnish resistant. Most stains can be easily removed. 5 yr* warranty.
SPS 1313b	Acrykote - Platinum	Resistant to hose hold chemicals, non alcohol beverages etc., excellent wash, Scrub and burnish resistance. 10 yr* warranty.
SPS 1313c	Acrykote - Kitchenkote	Withstand various condiments and food including oils, Mustard etc. 7 yr* warranty.
SPS 1314	Climatekote - Exterior	Offers excellent protection against moss, mould, lichen growth, mildew, salt spray and UV degradation. 15 yr* warranty against peeling, blistering and flaking.
SPS 1315	Highbuildkote (Exterior on plaster)	Offers excellent protection against moss, mould, lichen growth, mildew, salt spray and UV degradation. 15 yr* warranty against peeling, blistering and flaking.
SPS 1316	Trimkote	Ideal as replacement for enamels, quick drying, good flow, easy to clean and durable. Resistant to fungus, mould mildew etc. excellent UV resistance. Available in Gloss, Semigloss and Low Sheen.
SPS 1317	Glaze	Clear UV filter and sealer as final coat on concrete roof tiles.
SPS 1318	Roofkote	For Tiles, Iron, Aluminium, Galvanised Iron roofs, Asbestos etc. resistance to Fungus, Mildews, Mould and Moss. UV resistant.
SPS 1319	Insulating Roofkote	For use on Roof, Tiles, Asbestos, Wood, Aluminium, Corrugated Iron, Colour Steel. Reduces heat absorption by 30%, ideal for factories, storage sheds etc.
SPS 1320	Floorkote	Highly durable acrylic coating for concrete floors.
SPS 1322a, b	Floor Lacquer Interior	High viscosity, hard wearing system, ideal for parquet and pre-finished floors Ideal replacement for epoxies and urethanes. Available in clear / tinted options.
SPS 1327a	Sand Stone Sealer	Dead flat, chemical and scuff resistant coat for sandstone, slate, terracotta, terrazo.
SPS 1327b	Concrete Sealer	Matt or gloss, seals and gives durable floor surface. Ideal over SPS 1320.
SPS 1351	Fencekote	Ideal for fences, stud farms etc, mould, mildew, moss and UV resistant Available clear or coloured.

INDUSTRIAL

SPS 1301	Anti Corrosive Primer	Primer for rusted or new metal surfaces : Aluminium, Steel and Galvanised Iron. Can be used on Tanks, Roofs, Steel Frames, Window / Door Frames, machinery and all engineering applications It protects against rust formation.
SPS 1302	Anti Corrosive Intermediate Coat	Extra protection mid coat for external use on superstructures, machinery etc.
SPS 1303	Anti Corrosive Top Coat	Top coat, very hard with excellent UV and corrosion resistance.
SPS 1301a	Anti Corrosive Primer Plus	Upgraded version of SPS1301 for coastal use or external harsh environment.
SPS 1302a	Anti Corrosive Intermediate Coat Plus	Upgraded version of SPS 1302 for coastal use or external harsh environment.
SPS 1303a	Anti Corrosive Top Coat Plus	Upgraded version of SPS 1303 for coastal use or external harsh environment.

Product Summary Sheet

INDUSTRIAL - contd.

SPS 1305	Metal Top Coat	Ideal for structural steel, coating over zinc spray, galvanised steel etc.
SPS 1329a	Metal Clear Coat Standard	To achieve a high gloss finish over the anti corrosive system also provides a total oxygen barrier to control corrosion.
SPS 1329b	Metal Clear Coat Premium	An upgraded version of SPS 1329a to be resistant to diesel, hydraulic oils etc.
SPS 1345	Metal Cleaner	To clean stainless steel and ferrous metal surfaces quickly. Removes rust.
SPS 1346	Concrete Cleaner	Will not fade oxides in coloured concrete or burn plants etc when rinsed off.
SPS 1361	Road Marking Paint	For use as Traffic Marking on Road surfaces, Curbs, Guide Posts, Airfields, Runways, Airport Parking, Public Parking etc. Can be applied directly to concrete.

MARINE

SPS 1342	Aluminium Cleaner	Cleans dirt and oil deposits on aluminium surfaces easily.
SPS 1343	Fibre Glass Cleaner	Removes oxidised gel coat, and gives extremely smooth finish.
SPS 1391	Aluminium Clear Coat	Petro chemical resistant, and oxygen barrier to maintain aluminium.
SPS 1392a,b	Wood Lacquer Interior	Premium wood coating, no sealer required, apply direct to substrate, No sanding required between coats Minimal to no grain lifting Ideal to spray, brush or roller Non yellowing Excellent chemical and water resistance.
SPS 1396	Marine Anti Corrosive Primer	High resistance anti-corrosive coating system for the marine environment.
SPS 1397	Marine Anti Corrosive Intermediate Coat	High resistant mid coat system for marine use.
SPS 1398	Marine Anti Corrosive Top Coat	High resistant mid coat system for marine use.
SPS 1399	Marine Clear Coat	Rugged marine clear coat usually applied as finishing coat over anti-corrosive coating.

SPECIALISED

SPS 1321a-f	Wood Lacquer Interior	Premium wood coating, no sealer required, apply direct to substrate.
SPS 1321g-l	Wood Lacquer Exterior	Excellent transparent tints available No sanding required between coats Minimal to no grain lifting Ideal to spray, brush or roller Exterior system has extra UV filters Non yellowing Excellent chemical and water resistance.
SPS 1324	High Build Acrylic Clear Coat	Non yellowing, ultra clear thick coat for protecting bar tops etc. Scratches can be buffed and polished out.
SPS 1325	Medicoat	High gloss clear coat, to go over acrylic or acrylic plus coating, or existing paint. Hard durable surface with Anti-static closed pore technology to give hygienic finish. Ideal for food prep areas also.
SPS 1326	Anti-Graffiti Clear Coat	Clear coat for graffiti protection.
SPS 1348	Graffiti Ink Remover	Non solvent remover to be used in conjunction with Anti-Graffiti Clear Coat.
SPS 1349	TTC Tile, Mould/Moss Treatment	For treatment of concrete tiles prior to application of coatings, - kills moss, mould, lichen etc.
SPS 1350	PPC Mould/Moss Treatment	For general use on all surfaces - kills moss, mould, lichen etc.
SPS 1371	Plast 'O' Fix	Construction adhesive and cement based waterproof system for balconies, terraces, cellars and ceramic tiles.

* conditions apply



WHY use SPS and ROYAL Range?

- 💧 Water based 100% acrylic.
- 💧 Low VOC's.
- 💧 Non- flammable.
- 💧 No ethylene glycol.
- 💧 Excellent application properties.
- 💧 Spray, brush or roller.
- 💧 Easy water clean up.
- 💧 Advanced technology.
- 💧 Eco friendly products.
- 💧 UV resistant.
- 💧 Cost saving on paint and labour.
- 💧 In-house testing for quality control.
- 💧 No aromatic hydrocarbon solvents.
- 💧 Great opacity and excellent coverage.
- 💧 Moss, mould and lichen growth resistant.

INTERIOR



EXTERIOR



INDUSTRIAL

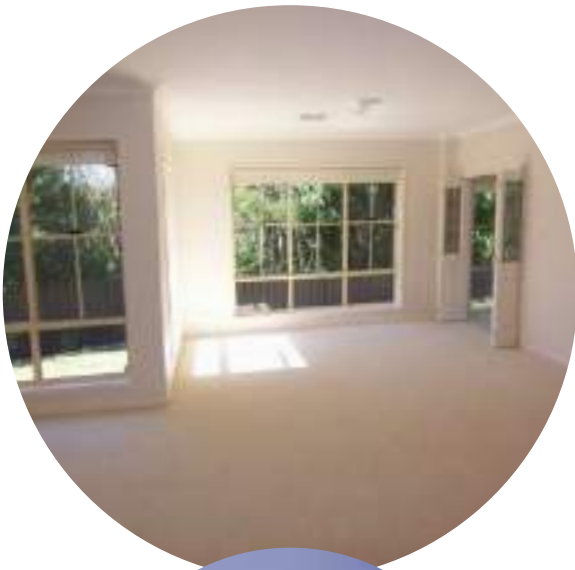


SPECIALISED

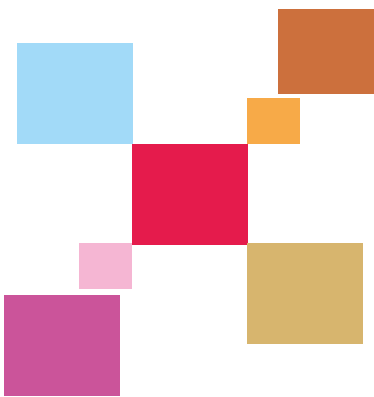


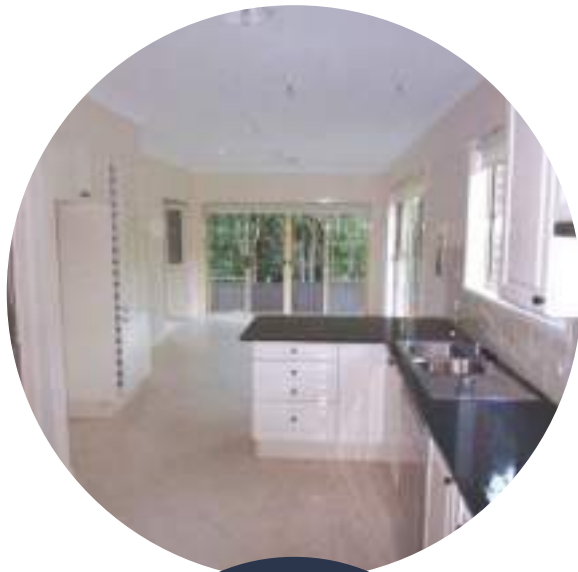
CIVIL



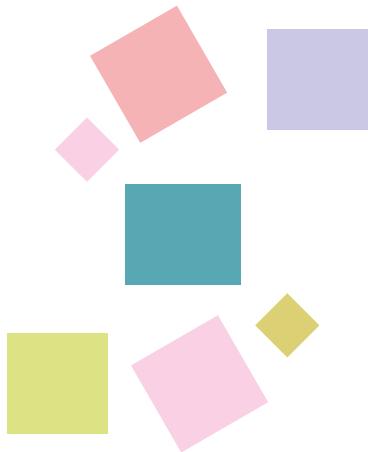


Water based non-solvent Acrylic multipurpose sealer ideal for all interior / exterior i.e. **wood, wood chipboard, hard board, plywood, MDF, drywalls etc.** We recommend applying one coat to get an even surface perfection before top coating. **It has excellent opacity, good sanding properties, easy to apply, and quick drying.**





Water based 100 % Acrylic Ceiling White is deal for use on ceilings. It is formulated to provide good hiding properties on ceilings. It is economical, durable and has **excellent application properties, gives a flat finish, hides imperfections & promises value for money.** It does not contain ethylene glycol or any aromatic hydrocarbon solvents. It is resistant to **moss, mould, and lichen growth.**



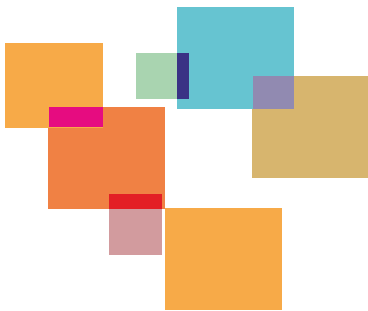


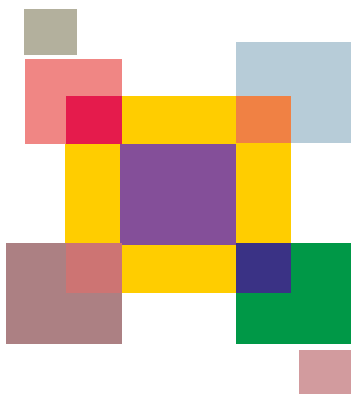
Interior - Low Sheen **SPS Acrykote** is a water based 100 % acrylic interior wall finish, has excellent flow giving a near brush mark free finish. Being an acrylic it offers excellent sheen uniformity. The shades retain their brightness for a longer time. It has **good wash, scrub and burnish resistance. Most stains can be removed easily** by sponging with a mild soap. We provide our customers a selection from our **36,000 magnificent colour shades.**





SPS Acrykote platinum is a premium water based interior wall finish. It has good wash, Scrub and burnish resistance. Good resistance to household chemicals, non-alcoholic beverages, red wine, white wine, beer, powder coffee, black tea, blackcurrant, juice, condensed milk, butter, olive oil, mustard, common salt onions, acetic acid, and citric acid





SPS Climatekote is a time tested and approved higher-grade water based exterior paint, with most specialised modern formulations & raw material. It is pigmented to produce durable and protective coatings of outstanding merits. It ensures shade retention for a long time & its fast drying properties facilitates quicker completion of paint jobs. It offers excellent protection against **Moss, mould, lichen growth, mildew, salt spray and UV degradation. With a 15-year* warranty against peeling, blistering and flaking.**





SPS Kitchenkote is a water based coating designed for Indian Cooking. It withstands various condiments and food and can be easily cleaned without being stained.





Gloss / Semigloss / Satin Acrylic is the replacement for enamels, ideal for interior / exterior **windows and door frames, doors, skirting etc.** Its advanced technology has superior block resistance making it ideal choice for trim and doors. **It does not contain ethylene glycol or any aromatic hydrocarbon solvents.** It combines excellent application characteristic with outstanding performance at a reasonable price.





SPS Roofkote have been specially formulated and developed over many years to provide the most durable finish against extreme weather conditions. It has great opacity with outstanding **UV resistant power**. Roofkote contains components to make the dry film **moss, mould, lichen growth, salt spray and mildew resistance**. Available in popular shades.





An Acrylic water based coating ideal for parking areas, Garage floor, Terraces. Etc. The product is designed to with stand Hot Tyre and foot Traffic.





SPS Water Repellent Membrane, a clear coating formulated for water repellency to be used in the areas prone for dampness. It is recommended to use on **substrate prior to applying SPS Multipurpose Sealer and Top Coats.**





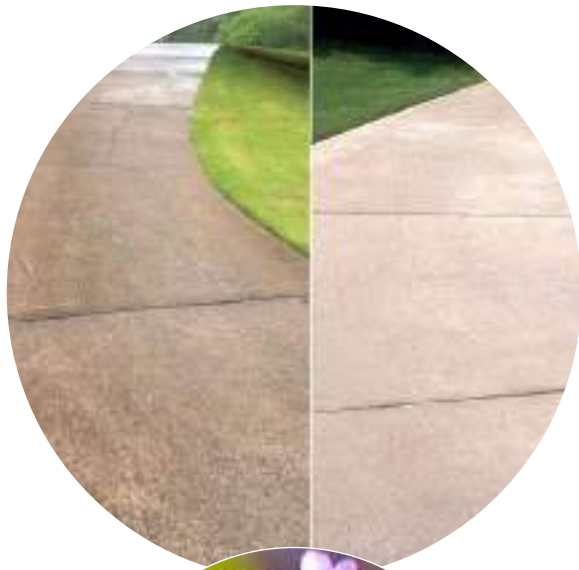
SPS Plast "O" fix is a white paste for water repellency. It prevents plaster from cracking when temperatures fluctuate between -10°C and 50°C . It is used in **cement based plaster, waterproof systems for balconies, terraces, bathrooms, cellars, ceramic tile adhesives and water tight tile adhesives.**



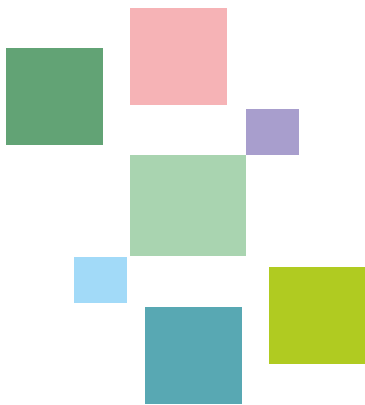


SPS Moss and Mould a green product designed to work effectively to kill moss, mould, fungus, algae, etc. without harming garden and other plants.



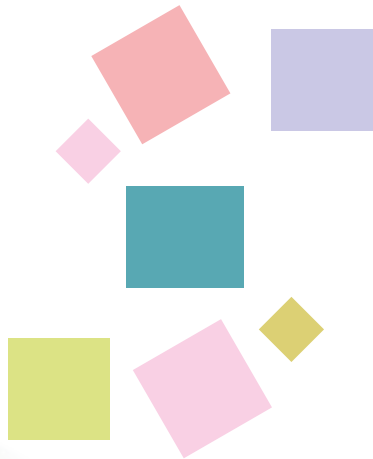


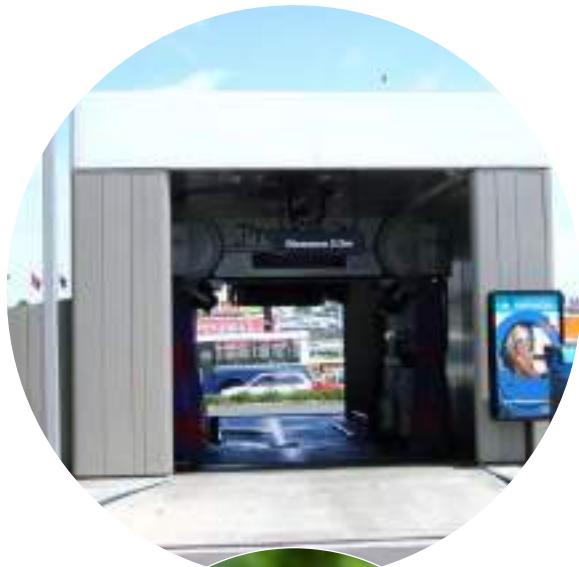
SPS Concrete Cleaner, a product formulated to leach out salt / *efflorescence*, and *grease* from various substrates as namely walls, floors etc.





Water based Metal Primer is ideal for iron, aluminium and galvanised iron. It is easy to apply, economical, durable and **free from lead and chromate having excellent adhesion and photochemical properties.** It can be brushed, rolled or sprayed with conventional or airless spray.





Water based products designed to resist various environmental condition & numerous type of corrosive substances. Used in factories, nuclear power stations, Gas station (petrol pump), petroleum tanks, silos etc.





Water based coatings resistance to household chemicals, non alcoholic beverages, red wine, white wine, beer, powder coffee, black tea, black current juice, condensed milk, butter, olive oil, mustard, common salt, onions, Acetic acid, citric acid, and back heels. The product is designed for Flooring system, interior / exterior application on wood, wood chip board, Hardboard, MDF plywood etc.

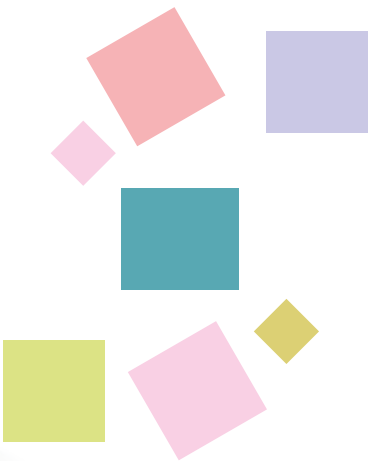
Thermal Resistance :

Spread of flames Index (SFI) - 8

Smoke Developed Index (SDI) - 4

Continuous surface - 100° C

Non Continuous -150° C





Intumescent paints offer a tone of great **benefits** : In addition to general construction, they're also being used as **fire stopping material** in offshore drilling, aircraft maintenance, and the shipping industry.





**MATERIALS & TESTING
LABORATORIES LIMITED**

Destructive & Non-destructive Test House

CERTIFICATE OF TEST

Report No. 13720/1
Page 1 of 1 page

Reference : SPS COATINGS LTD.
Attention : Simon Simon Seagrave

Subject : 10 Year UV Test for Luxaflex on cedar Lath

Date Started : 18/12/02 Finished 03/03/03.

Location : Devon Industries Ltd.

Equipment : QUV Accelerated weathering tester.
1000 Hours Test at 50 c
Using Type B Lamps 340nM
Water Spray Every 100 hours for minutes

<u>Calibrated :</u>		<u>Start Irradiance</u>	<u>Finish Irradiance</u>
Lamp 1 front		1	1.04
Lamp 2 front		0.92	1.04
Lamp 3 rear		0.91	1.04
Lamp 4 rear		0.85	1.04
Elapsed Time Start			6814
Elapsed Time Finish			7813
Total			999 hours -0 +1 reading
Elapsed Timer Reading at Finish			1000 hours

RESULTS :
Control samples were retained in our laboratory and compared to the samples under test at 500 and 1000 hours test duration. Devon Industries was visited during the test and I here by certify the samples were subjected to the above test parameters.

Evaluations :

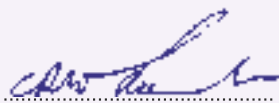
<u>Sample</u>	<u>500 Hrs</u>	<u>1000 Hrs</u>
Baltic Pine	No change	Slightly liter
Walnut Wash	Slightly Darker	Darker
Jara	No Change	Slightly darker
Misty Grey	Slightly liter	Slightly liter
Standard on Medium Light	No Change	Slightly darker
Standard on Medium Dark	Slightly liter	Slightly liter
Golden Glow	No Change	Slightly darker

No break down of the coating or gloss levels was discernable after 1000 hours.

The blind samples had no definite UV Lines. Miratone existing product completely broken down at 800 hours (approximately).

Oil finish the same or lightly darker after 1000 hours.

Reported by: CAW
Date reported: 13/03/03
Chekcked by: 

Signed: 
C.A.WHEELER



PACIFIC AEROSPACE CORPORATION LIMITED
Hamilton Airport, Private Bag HN3027, Hamilton, New Zealand
Telephone 0-7 843 6144 - Fax 0-7 843 6134
Email - pacific@aerospace.co.nz
Web site - www.aerospace.co.nz

**Customer SPS Coatings.
Salt Spray Test ASTM B117.
Test rig endorsed by BOEING.**

7th Sept 2001
6 degree angle of inclination.
Duration of test 168 hrs continuous.

6 test pieces supplied. One stainless base material retained as a control. one used as control
Base material supplied aluminium alloy .100" mm thick 11" X 3".

Primer Colour Grey. Topcoat Colour White.

Test Piece One

Primer 10.5-11.5 mil Topcoat 12.1-14.6 mil
Some slight evidence of dust or solid inclusions in topcoat. No corrosion

Test Piece Two

Primer 9.80-12.7 mil Topcoat 13.1-15.8 mil
Again inclusions predominantly in the topcoat No corrosion

Test Piece Three

Primer 7.92-9.68 mil Topcoat 5.51-7.14 mil
Again inclusions predominantly in the topcoat No corrosion

Test Piece Four

Primer 5.28-5.92 mil Topcoat 7.73-10.7 mil
Again inclusions predominantly in the topcoat No corrosion

Test Piece Five

Primer 9.06-10.9 mil Topcoat 11.6-15.5 mil
Again inclusions predominantly in the topcoat No corrosion

Test Piece Six

Primer 5.92-6.40 mil Topcoat 8.52-9.23 mil
One corrosion pit in topcoat with ferrous coloured witness possibly caused by contamination of panel during spraying.

Overall summary

It appears the coatings are fairly coarse and this is evident under a 30 X power scope.
In general the application of these coatings may be acceptable for industrial coatings however they were either sprayed in poor conditions or the solids in the paint are very coarse and may benefit from some straining through a fine gauze prior to mixing.
These coatings withstood 168 hrs continuous immersion in this harsh environment, with no evidence that the coating failed its purpose of corrosion protection of the base material in this case commercially supplied aluminium of unknown grade.

Note : 1 mil = 1 Thousandth of an inch .Used in coating thickness measurements and is not to be confused with the abbreviation for millimeter.

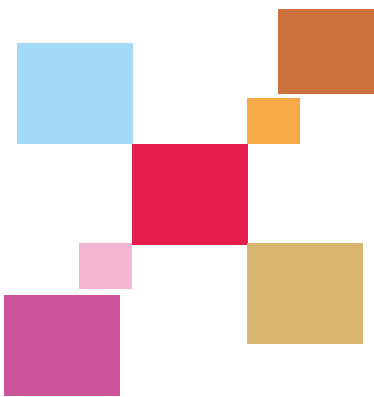
Dave Jordison

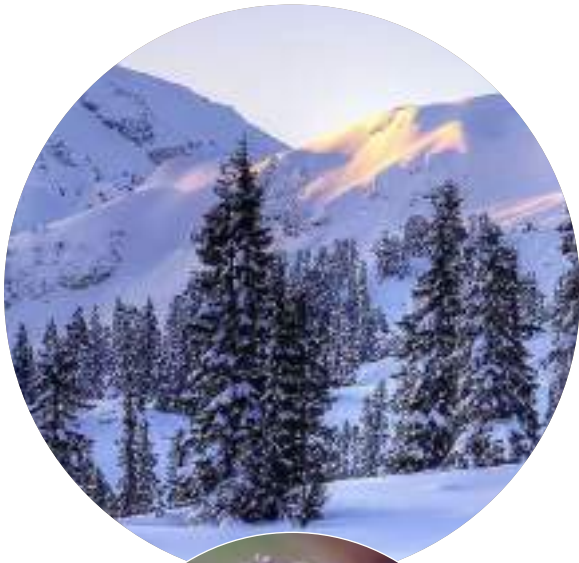


Chief Inspector
Pacific Aerospace Corp Ltd

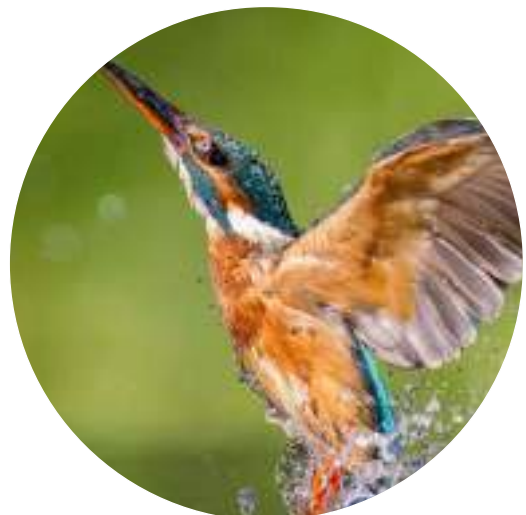
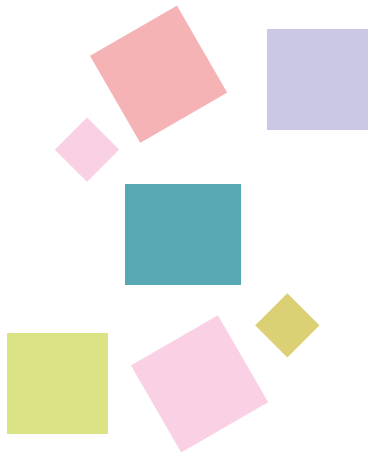


Water based acrylic Universal sealer/primer ideal for all interior/ exterior drywalls etc. We recommend applying one coat to get an even surface perfection before top coating.





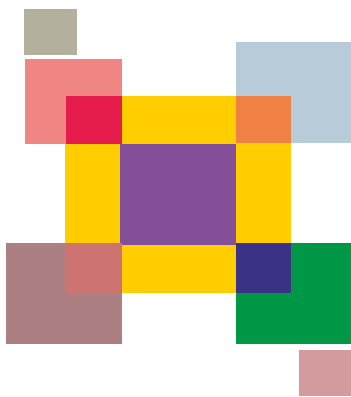
Water based 100 % Acrylic Ceiling White is ideal for use on ceilings. It is economical, durable, gives a flat finish and promises value for money.





Gloss, Semigloss, Satin & Low Sheen is a water based 100 % Acrylic interior wall finish, has excellent flow giving a near brush mark free finish. Being an acrylic it offers excellent sheen uniformity. The shades retain their brightness for a longer time.





It is pigmented to produce durable and protective coatings of outstanding merits. It ensures shade retention for a long time & its fast drying properties facilitates quicker completion of paint jobs. It offers excellent protection against **Moss, mould, lichen growth, mildew, salt spray and UV degradation. With a 10-year* warranty** against peeling, blistering and flaking.





A high build pigment coating which can be applied 1mm – 2mm giving a texture finish fine, medium & coarse. It offers excellent protection against moss, mould, lichen Growth mildew, salt spray and UV degradation With a **10 years warranty** .



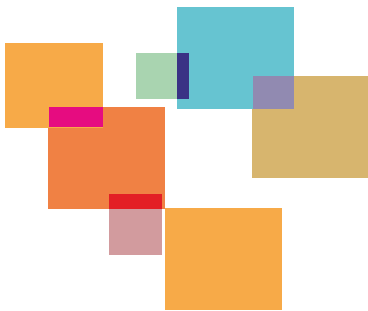


Royal Woodkote, is a water based coating, for furniture door frames, door etc. a replacement for melamine. It does not contain ethylene glycol or any aromatic hydrocarbon solvents.





Royal Putty is a 100% Water based Acrylic Putty. The product is designed to exhibit water repellency property and give a uniform finish to the wall.



 **SPS COATINGS LIMITED**

9-D RYAN PLACE , MANUKAU
PO BOX 12 866, PENROSE
AUCKLAND, NEW ZEALAND
WWW.SPSCOATINGS.COM

office +64 9 9206015
sales +64 9 920 6016
fax +64 9 273 1240
e-mail sanjiv@spscoatings.co.nz

6th March 2004

TEST REPORT

Product : ROYAL EXTERIOR

Royal Exterior is water based 100% acrylic, high performance, and long lasting Gloss/ Semigloss wall finish.

Number of specimens provided	One
Substrate	Cement sheet
Application	Royal Universal Sealar - One (1) Coat Royal Exterior - Two (2) Coats
Continuity of test	No interruption during the test

SPS Coatings Limited conducted following tests

TEST SUMMARY :

Sr. No	Test as per ASTM standards	ASTM standards	Hours
Test No 1	Salt Spray (Fog) Test	ASTM B117	250
Test No 2	Humidity Test	ASTM D2247 - 02	250
Test No 3	UV Resistance Test	ASTM D4587 - 01	500
Test no 4	Cracking	ASTM D661 - 93 (2000)	
Test No 5	Blistering	ASTM D714 - 02	
Test No 6	Flaking & Peeling	ASTM D772 - 86 (2000)	
Test No 7	Gloss	ASTM D3928 - 00a	
Test No 8	Adhesion	ASTM D3359 - 02	
Test No 9	Coating Thickness	ASTM D6132	

Test No 1 :**SALT SPRAY (FOG) TEST : (AS PER ASTM B117)**

Apparatus	:	Salt Spray (Fog) Chamber, Salt solution, a supply of suitably conditioned air, one or more atomizing nozzles, specimen support, provision of heating and necessary means of control.
Salt solution	:	The salt solution is prepared by dissolving 5+/- part by weight of sodium chloride in 95 parts of de-ionised water.
Type of water	:	De-ionised water
Type of salt	:	Sea-Salt
Duration of test	:	250 hours

Test No 2 :**Humidity Test : (AS PER ASTM D2247 – 02)**

Apparatus	:	Humidity Chamber, deionised water, specimen support, digital temperature & humidity controller and necessary means control.
Duration of test	:	250 hours
Type of water	:	De-ionised water
Chamber humidity	:	Chamber humidity maintained at 97 +/- 2%
Chamber temperature cycle*	:	42°C to 49°C (*Cycle - Temperature rises from 42°C to 49°C and then cuts off, drops to 42°C and then rises back to 49°C) Please refer the observation chart given below.

Test No. 3 :**UV Resistance Test: (AS PER ASTM D4587- 01)**

Apparatus	:	UV Cabinet with 254 nM, 340 nM & 365 nM -UV tubes
Duration of test	:	500 hours Please refer the observation chart given below

Test No. 4 :**Cracking : AS PER ASTM D661- 93 (2000)**

Please refer the observation chart given below

Test No. 5 :**Blistering : (AS PER ASTM D714- 02)**

Please refer the observation chart given below

Test No. 6 :**Flaking & Peeling : AS PER ASTM D772- 86 (2000)**

Please refer the observation chart given below

Test No. 7 :**Gloss (AS PER ASTM D3928- 00a)**

Please refer the observation chart given below

Test No. 8 :
Adhesion : (AS PER ASTM D3359- 02)

Please refer the observation chart given below

Test No. 9 :
Coating Thickness (AS PER ASTM D6132)

Please refer the observation chart given below

Test No. 10 :
Staining
ASTM D3730 - 03 Standard Guide for Testing High-Performance Exterior Architectural Wall Coatings
ANALYSIS:
OBSERVATION CHART AFTER SPRAY (FOG) TEST, HUMIDITY TEST, & UV RESISTANCE TEST:

Properties	Before test	After test
Staining	-	No staining
Colour	Pink	Pink (No change)
Cracking	None	None
Blistering	None	None
Flaking & Peeling	None	None
Gloss Level at 60°C	45.3	45.1
Adhesion	Good	Good
Coating Thickness	50 microns	50 microns

Authorised Signatory



Sanjiv Joshi

B.E. (Chemical Engineering)

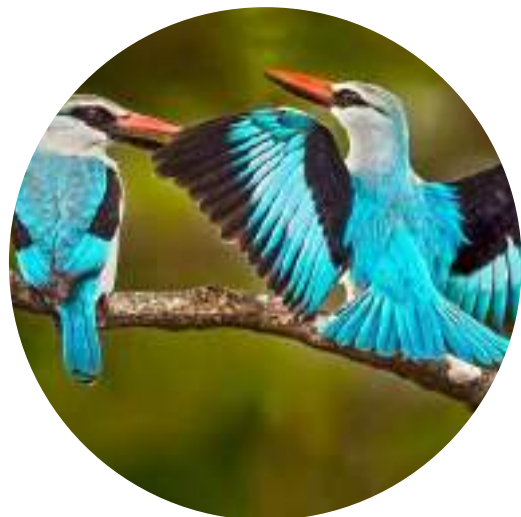
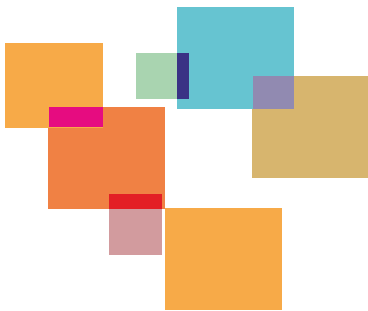


Diamond Primer Water based Acrylic Primer
Suitable for exterior, dry walls etc.





Diamond Interior is a 100% Water based Acrylic product in Matt/Lowsheen. Economical & gives a good finish.





Diamond Exterior Acrylic Water based product offers protection against Moss, Mould, Lichen growth, Mildew, Salt Spray & UV degradation. **7 Years Warranty** against Peeling, Blistering & flaking.





SPS COATINGS PVT. LTD.

ECO FRIENDLY PAINTS



MAKE IN INDIA

www.spscoatings.com